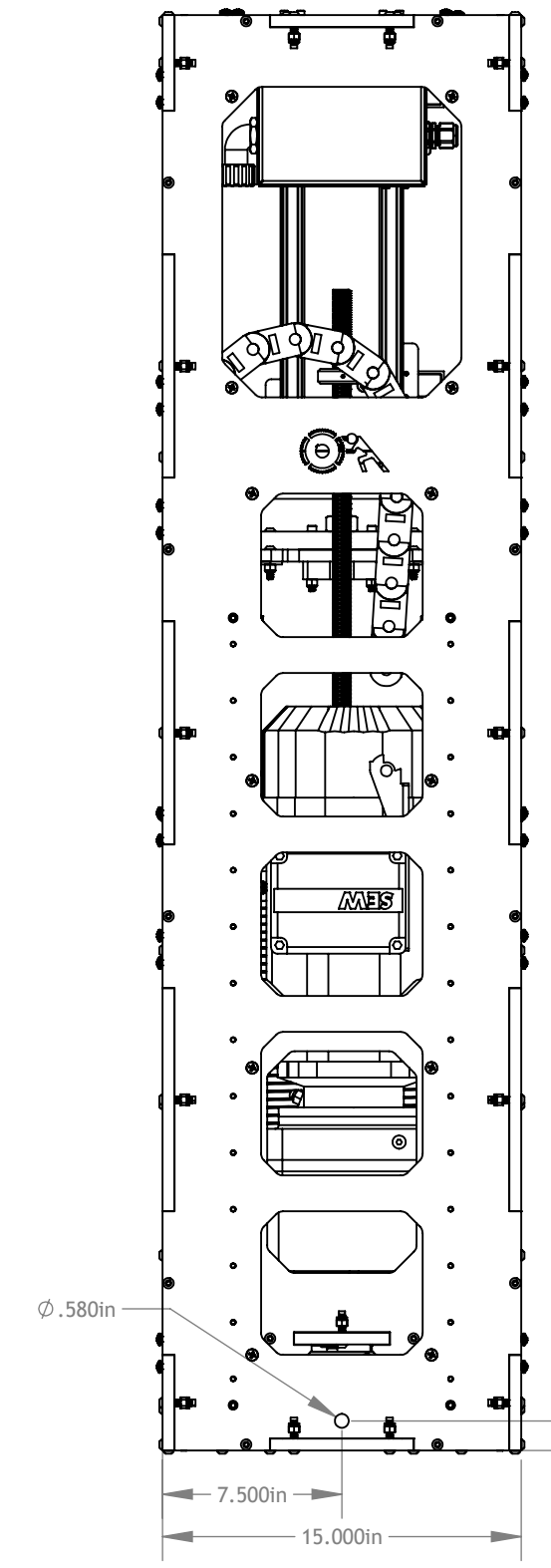
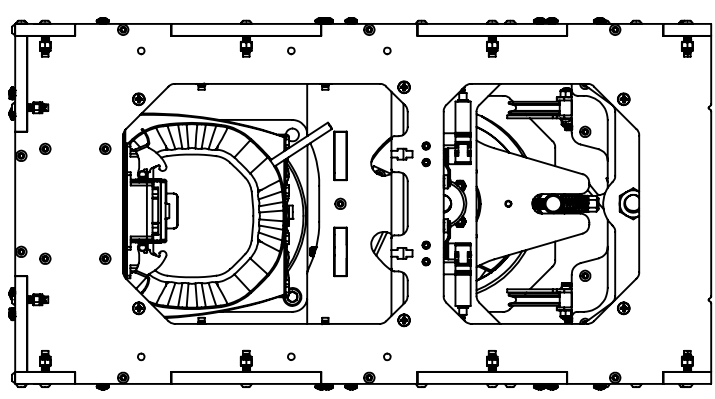


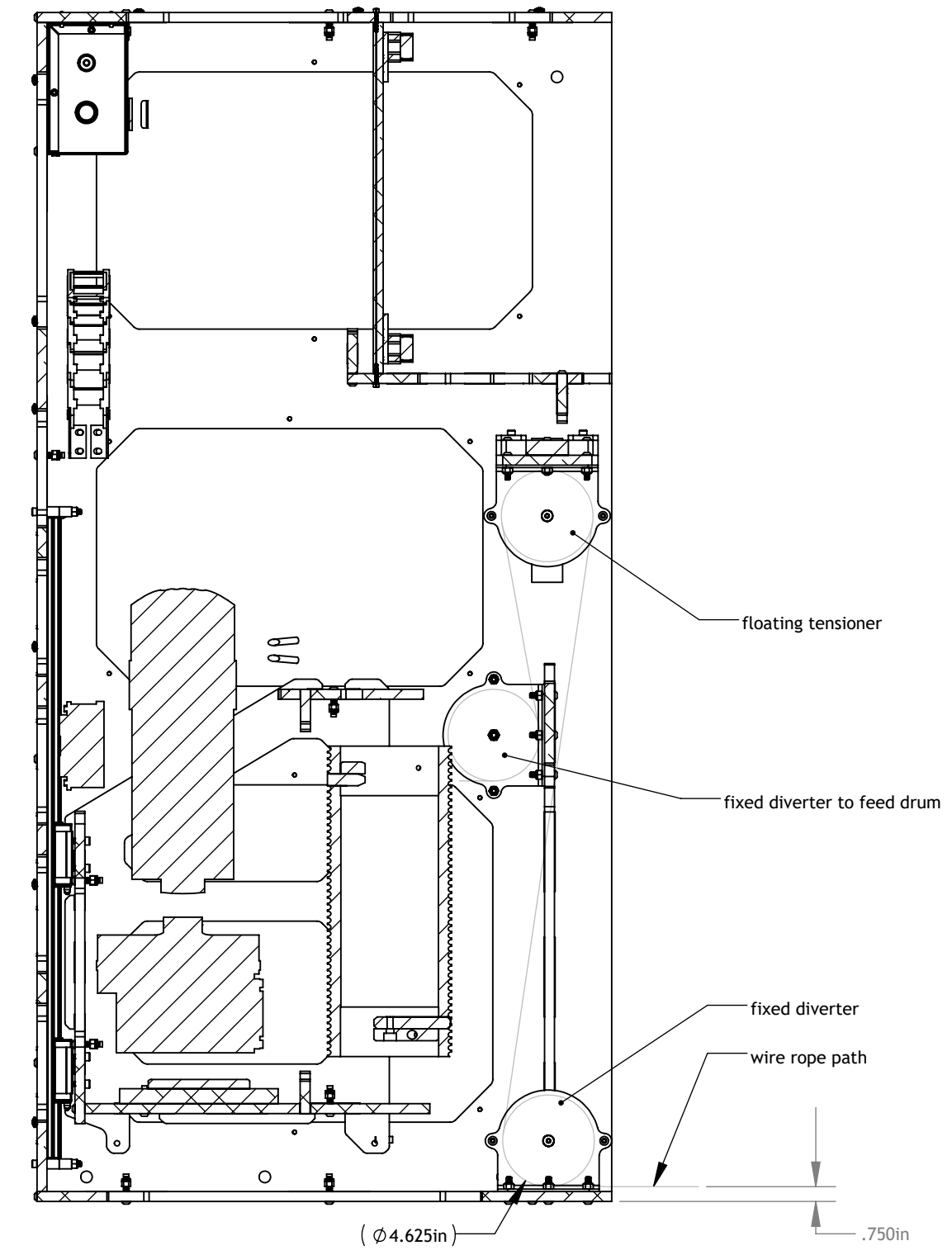
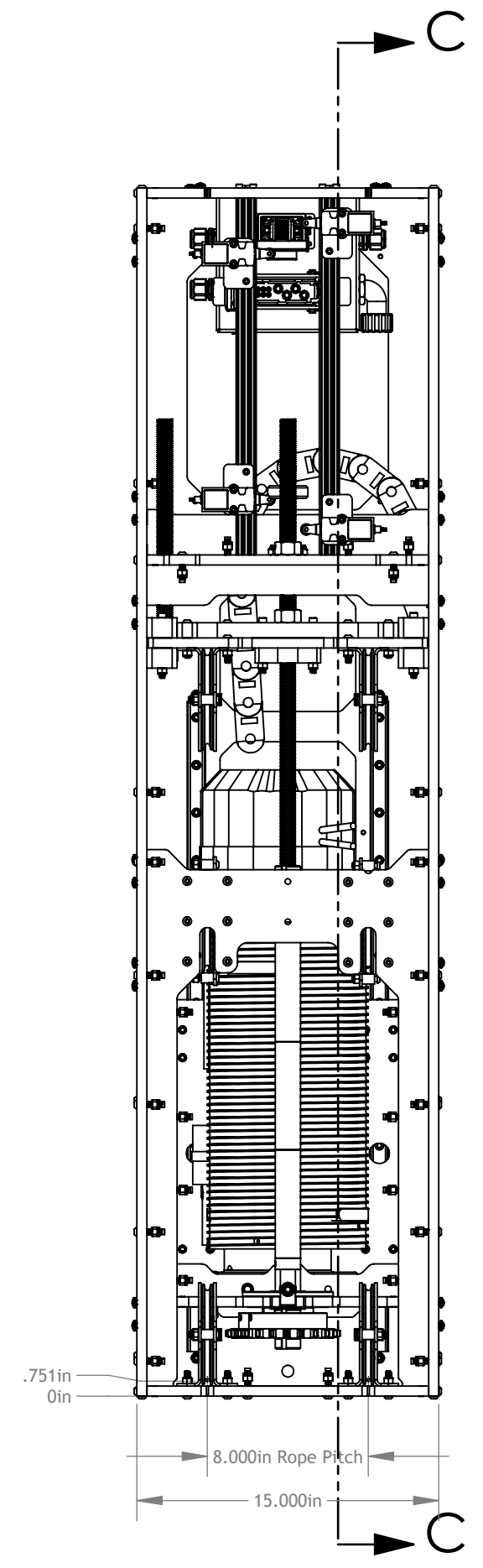
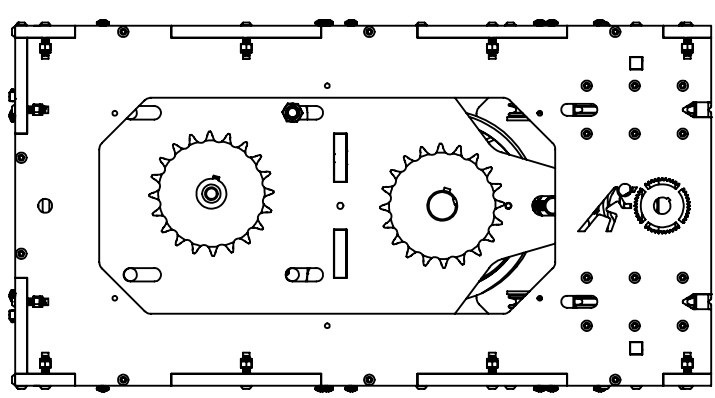
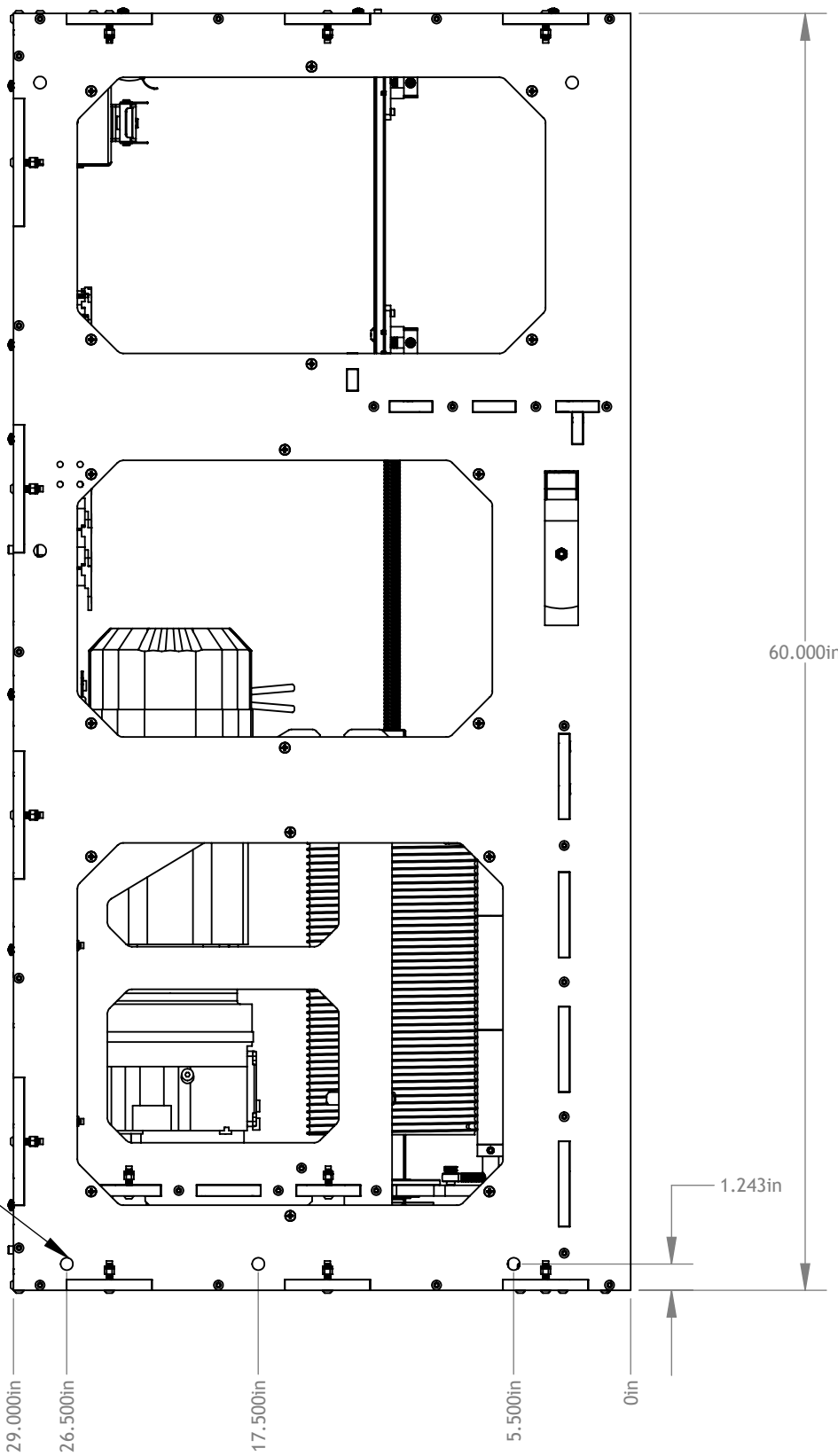
REVISIONS			
Rev.	Drawn	Date	Revisions



Pushstick v2
Orthographic Views
Scale: 1:8
Drawn on: 1/5/2016
Revised on: 8/6/2016



Holes spaced for Unistrut
brackets for easy mounting



SECTION C-C

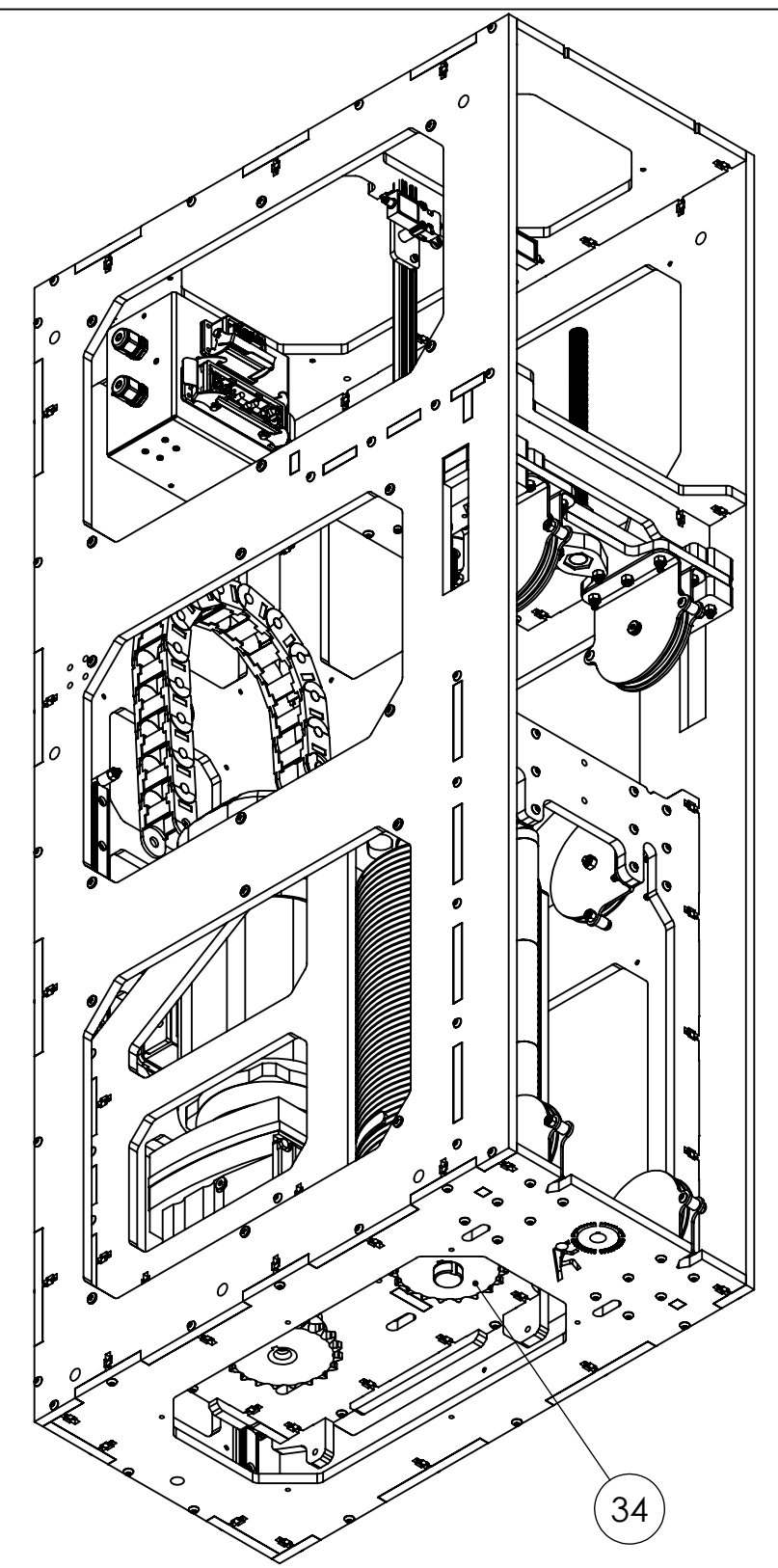
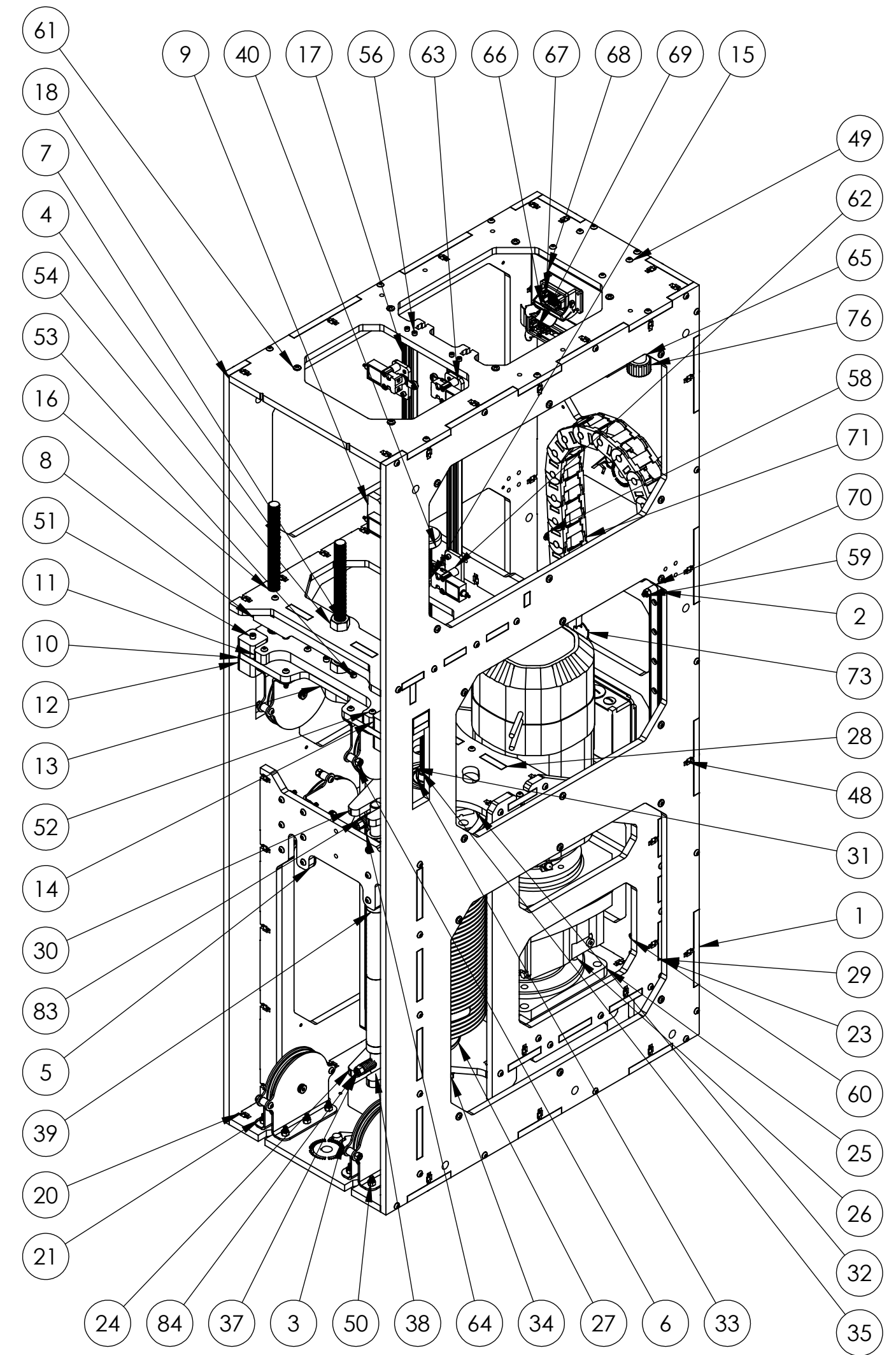
tolerances:
X: ±.010
XX: ±0.010
XXX: ±.003


the information
contained in this
drawing is the
property of creative
conners inc.

Item #	Item Description or Part Number	Qty.	PartNo
1	Frame Back	1	PS2-FBK
2	6250K46	2	
3	Frame Bottom	1	PS2-FBM
4	Frame Side Plate	2	PS2-FSP
5	Frame Pulley Plate	1	PS2-FPP
6	Assem - Sheet Metal Sheave Plates	6	
	Pulley Plate	2	PS2-PP
		-	
	Pulley 5in, Ralmark #M-5B	1	CCI Part No.
	91259A623	1	
	91255A544	3	
	95615A120	2	
	97135A220	1	
	92415A866	2	
7	Frame Nut Plate	1	PS2-FNP
8	Tensioner Nut Support Front	1	PS2-TNSF
9	Tensioner Nut Support Back	1	PS2-TNSB
10	Tensioner Bottom	1	PS2-TB
11	Tensioner Top	1	PS2-TT
12	Tensioner Bottom Bearing	2	PS2-TBB
13	Tensioner Nut Keeper	1	PS2-TNK
14	Tensioner Top Bearing	4	PS2-TTB
15	Assembly- 1in-6 Mounted ACME Nut	1	
	Part- ACME Mounting Flange, McMaster #95082A644	1	
	Part- 1in-6 Acme Nut, McMaster #95072A301	1	
16	Jack Bolt	2	PS2-JB
17	Part- Limit Switch Track	2	
18	Frame Top	1	PS2-FT
19	91290A328	1	
20	91255A544	2	
21	95615A120	2	
22	Part- THK SSR XWY Linear Bearing	4	
23	Carriage Back	1	PS2-CBK
24	Carriage Bottom	1	PS2-CBM
25	Motor Mount	1	PS2-MM
26	Part- RF67 SEW Gearmotor	1	
27	Assembly - Retainin Ring Bearing With Housing	1	
	2782T89	1	
	Retaining Ring - Bearing Housing	1	PS2-BH
28	Carriage Support	2	PS2-CS
29	Carriage Side Plate	2	PS2-CSP
30	Carriage Top	1	PS2-CT
31	Assembly - Retainin Ring Bearing With Housing	1	
	2782T89	1	
	Retaining Ring - Bearing Housing	1	PS2-BH
32	Assembly- Drum	1	
	Part- Drum	1	PS2-D
	Part- Drum Spoke Keeper X	1	PS2-DKX
	Part- Drum Spoke X	1	PS2-DSX
	Part- Drum Spoke Y	1	PS2-DSY
	Part- Drum Spoke Keeper Y	1	PS2-DKY
	Part- Cable Clamp	2	PS2-DCC
33	Drive Shaft	1	PS2-DS
34	6280K586	2	
35	Lead Screw	1	PS2-LS
36	91259A621	2	
37	3798K23	2	
38	Cable Keeper Shaft	1	PS2-CKS
39	Part - Cable Roller	3	
40	Limit Nut	1	PS2-LN
41	90128A265	1	
42	91251A588	1	
43	91251A720	1	
44	95615A210	1	
45	92220A183	1	
46	91251A628	1	
47	Cable Chain Bracket	1	PS2-CCB
48	Assembly - Frame Bolt	116	
	91255A544	1	
	95615A120	1	
49	91255A544	31	
50	95615A120	49	
51	91251A554	4	
52	91255A548	8	
53	90044A127	2	
54	95462A538	2	
55	97135A220	1	
56	91251A347	8	
57	91251A546	4	
58	92415A866	8	
59	91251A551	4	

Item #	Item Description or Part Number	Qty.	PartNo
60	91290A328	42	
61	90272A537	54	
62	Assembly - Limit Switch	2	
	Limit Bracket	1	PS2-LB
	90692A738	1	
	92415A866	2	
	Limit Switch Compact AD - aem2g41z11-3_	1	
	91251A203	2	
	92196A269	1	
63	Assembly - Limit Switch	2	
	Limit Bracket	1	PS2-LB
	90692A738	1	
	92415A866	2	
	Limit Switch Compact AD - aem2g41z11-3_	1	
	91251A203	2	
	92196A269	1	
64	60475K74	2	
65	Spotline Electrical Enclosure Rev 2	1	
	BASE	1	CCI Part No.
	COVER	1	CCI Part No.
	PEM SS-032-1 ZI--N	5	
	PEM S-832-1 ZI--N	8	
	PEM S-0420-1 ZI--N	4	
	PEM S-440-1 ZI--N	4	
	PEM FH-032-8 ZI--N	1	
	ZP-MC24B-2-DBHM	1	
	ZP-MC24B-2-DBHM_01	1	
	ZP-MC24B-2-DBHM_02	1	
	ZP-MC24B-2-DBHM_03	1	
	ZP-MC24B-2-DBHM_04	1	
	ZP-MC24B-2-DBHM_05	1	
	ZP-MC24B-2-DBHM_06	1	
	ZP-MC24B-2-DBHM_07	1	
	ZP-MC24B-2-DBHM_08	1	
	ZP-MC24B-2-DBHM_09	1	
	ZP-MC06B-2-SBHM	1	
	ZP-MC06B-2-SBHM_01	1	
	ZP-MC06B-2-SBHM_02	1	
	Part - Brake Rectifier	1	
	KEB Brake Rectifier	1	
66	ZP-MC24B-2-DBHM	1	
	ZP-MC24B-2-DBHM_01	1	
	ZP-MC24B-2-DBHM_02	1	
	ZP-MC24B-2-DBHM_03	1	
	ZP-MC24B-2-DBHM_04	1	
	ZP-MC24B-2-DBHM_05	1	
	ZP-MC24B-2-DBHM_06	1	
	ZP-MC24B-2-DBHM_07	1	
	ZP-MC24B-2-DBHM_08	1	
	ZP-MC24B-2-DBHM_09	1	
67	ZP-MC06B-1-MC024_	1	
	ZP-MC06B-1-MC024_01	1	
	ZP-MC06B-1-MC024_02	1	
	ZP-MC06B-1-MC024_03	1	
	ZP-MC06B-1-MC024_04	1	
	ZP-MC06B-1-MC024_05	1	
	ZP-MC06B-1-MC024_06	1	
	ZP-MC06B-1-MC024_07	1	
	ZP-MC06B-1-MC024_08	1	
	Part- Male Pin Insert	24	CCI Part No.
68	ZP-MC06B-2-SBHM	1	
	ZP-MC06B-2-SBHM_01	1	
	ZP-MC06B-2-SBHM_02	1	
69	ZP-MC24B-1-MS048	1	
	ZP-MC24B-1-MS048_01	1	
	ZP-MC24B-1-MS048_02	1	
	Small Pin	8	CCI Part No.
	Large Pin	4	CCI Part No.
	binding head screw_ai	4	
70	Igus 200 Cable Chain Hole Bracket Left	1	
71	Assembly - Cable Chain	1	
	Igus 200 Cable Chain	14	
	Part - Chain Pattern Sketch	1	
72	Igus 200 Cable Chain Hole Bracket Right	1	
73	Igus 200 Cable Chain Peg Bracket Left	1	
74	Igus 200 Cable Chain Peg Bracket Right	1	
75	69915K53	3	
76	7466K588	1	
77	Safety Cover Back Bottom	1	PSC-SCBB
78	Safety Cover Back Top	1	PS2-SCBT
79	Safety Cover Side Bottom	2	PS2-SCSB

Item #	Item Description or Part Number	Qty.	PartNo
80	Safety Cover Side Middle	2	PS2-SCSM
81	Safety Cover Side Top	2	PS2-SCST
82	Safety Cover Top	1	PS2-SCT
83	9657K133	2	
84	95615A140	2	





 84 cutter st. #71 Warren, RI 02885

 401-289-2942

Pushstick v2
 BOM
 as noted
 Scale: 1/5/2016
 Drawn on: 8/6/2016
 Revised on:

tolerances:
 %: ±1/16
 .xxx: ±0.010
 .xxx: ±.003

the information contained in this drawing is the property of creative conners, inc.

PS2