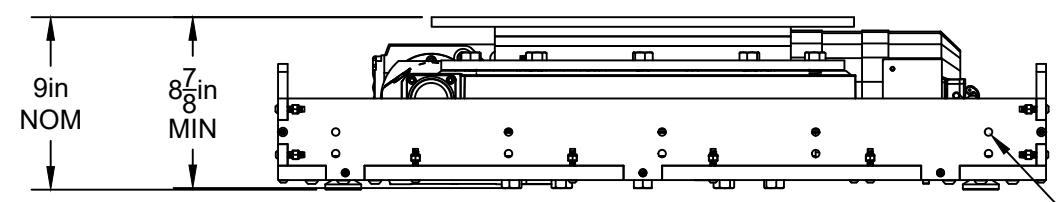
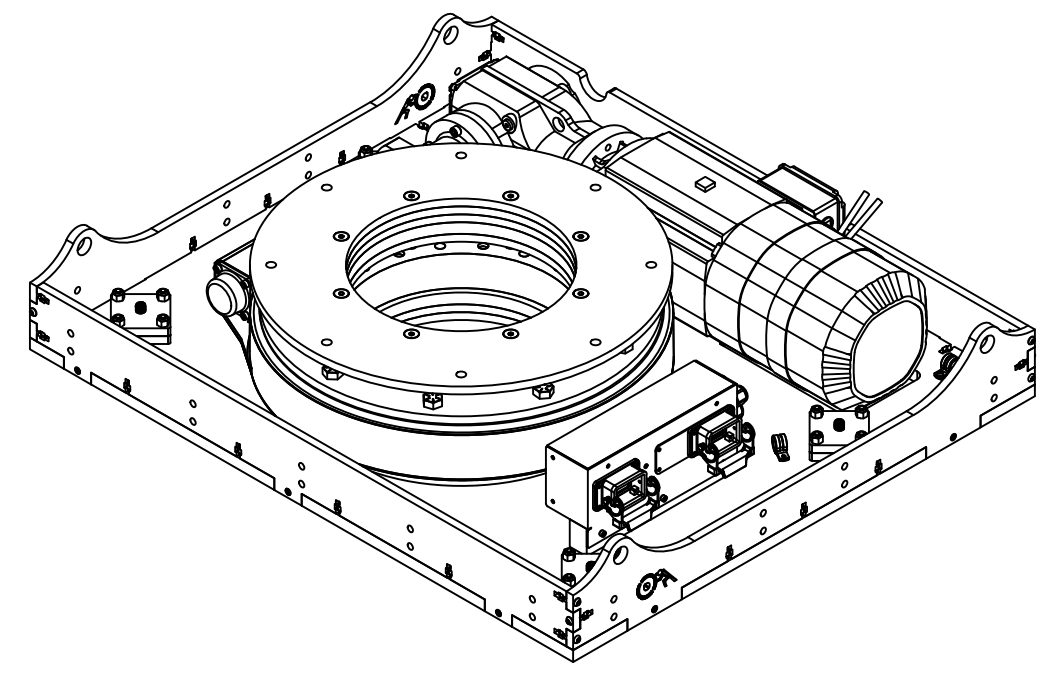
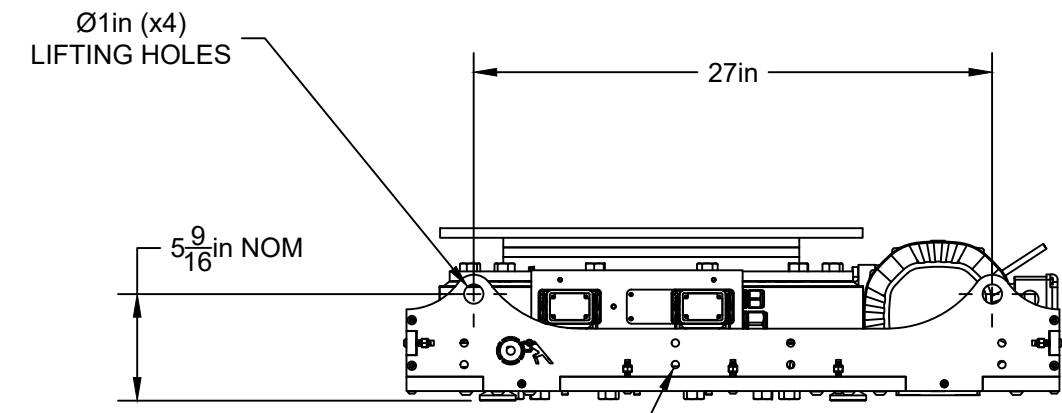


$\varnothing \frac{17}{32}$ in (x8)  
CLEARANCE HOLES FOR  $\frac{1}{2}$ " BOLTS



$\varnothing \frac{3}{8}$ in (x10 per side)  
FOR MOUNTING BRACKETS



$\varnothing \frac{3}{8}$ in (x8 per side)  
FOR MOUNTING BRACKETS

**ROTATOR DESIGN SPECIFICATIONS**

1. MAXIMUM VELOCITY: 1.5 RPM
2. MAXIMUM UNSUPPORTED AXIAL LOAD: 9700 LB
3. MAXIMUM CONTINUOUS TORQUE: 10,950 FT-LB
4. GEARMOTOR INPUT VOLTAGE: 230 VAC, 60 Hz
5. GEARMOTOR INPUT CURRENT: 18.6 Amps
6. MACHINE WEIGHT: 445 LB

Rev.	Drawn	Date	Revisions

tolerances:  
% :  $\pm \frac{1}{16}$ "  
.xx :  $\pm 0.010$   
.xxx :  $\pm 0.003$

the information contained in the drawing is the property of creative conners inc.

Revisions

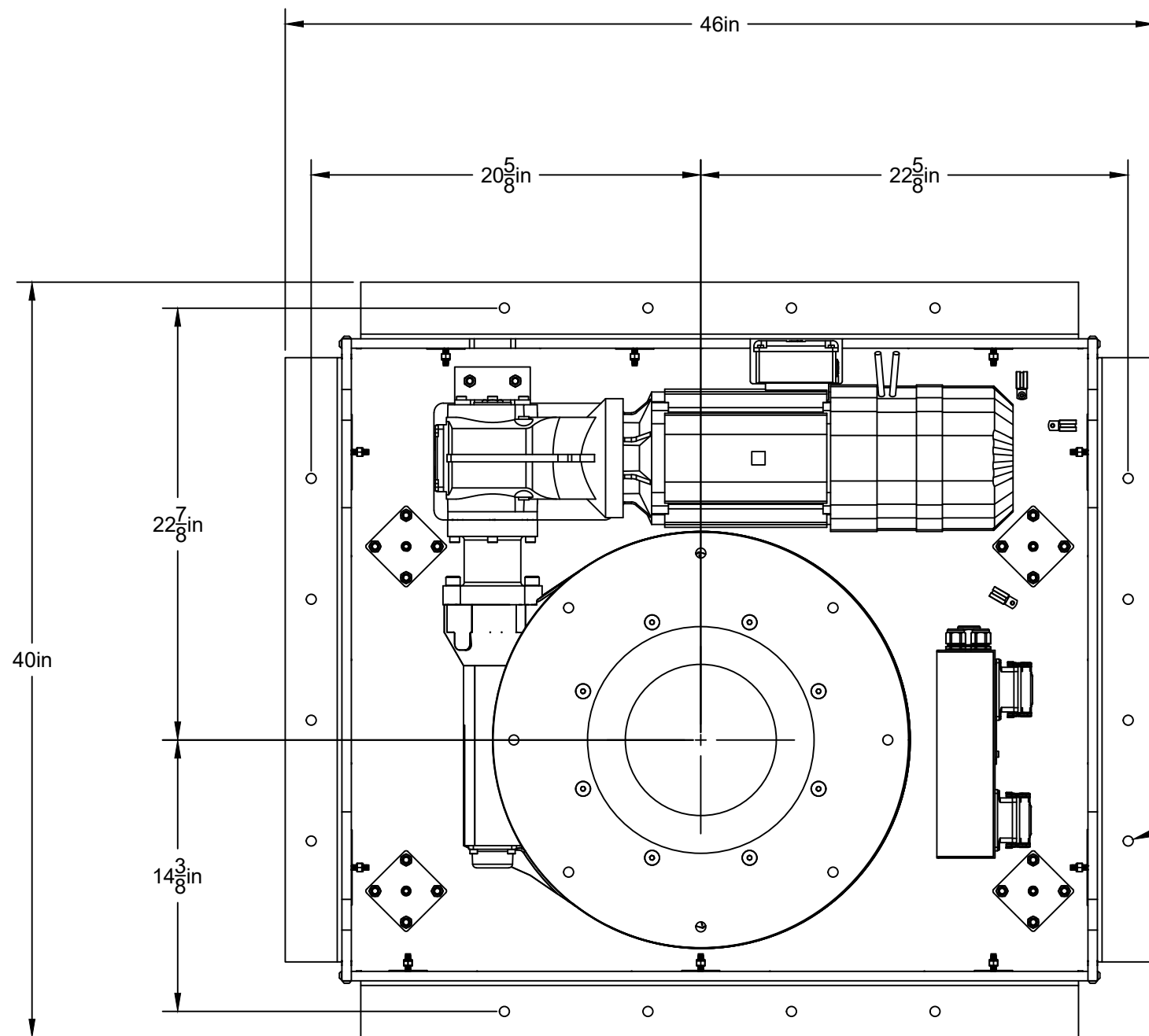
Date

Drawn

Rev.

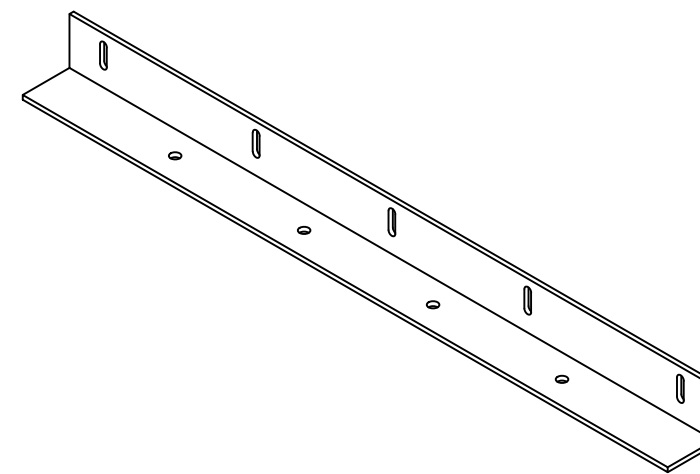
tolerances:  
% : ±1/16"  
.xx : ±0.010  
.xxx : ±0.003

the information  
contained in the  
drawing is the  
property of creative  
conners inc.

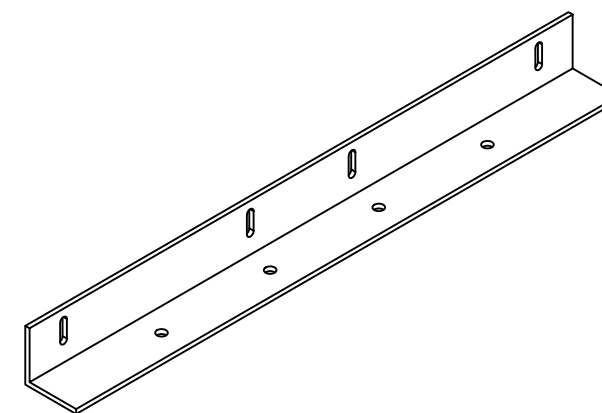


MOUNTING BRACKET INSTALLATION DETAIL

Ø17/32 in (x16)  
CLEARANCE FOR 1/2" BOLTS



MOUNTING BRACKET - LONG



MOUNTING BRACKET - SHORT