



SHOWSTOPPER 3 ACCESSORY HUB™

REFERENCE MANUAL V1.0

TABLE OF CONTENTS

GETTING STARTED	1
WHAT'S IN THE BOX?	1
FEATURES	2
INSTALLATION	3
MAKING THE CONNECTIONS	3
INPUT POWER	3
ACCESSORY INPUT/OUTPUT	3
TROUBLESHOOTING	4
When the Green and Amber lights are illuminated, you are ready to Make It Move!	4
Refer to the specific device manual for further troubleshooting.	4
TECHNICAL SUPPORT	5
SPECIFICATIONS	5
PHYSICAL SPECIFICATIONS	5
ELECTRICAL SPECIFICATIONS	5
DRAWINGS	6
OVERVIEW DRAWING	6
WIRING DIAGRAM	7

GETTING STARTED

Congratulations on your purchase of Showstopper 3 Accessory Hub from Creative Conners, Inc! The Showstopper 3 Accessory Hub expands the capabilities of your Showstopper 3 Base allowing 6 additional Showstopper 3 Accessory devices to your Emergency Stop Network. In order to use a Showstopper 3 Accessory Hub, you will also need a Showstopper 3 Base to power your Accessory Hub.

This manual will guide you through:

- Unpacking
- Installation
- Connecting Devices
- Troubleshooting

If you need help along the way contact us on our website (creativeconners.com), via email (support@creativeconners.com), or by phone (401-289-2942 x2). We want your automation to succeed and we are eager to help you through any head-scratching issues.

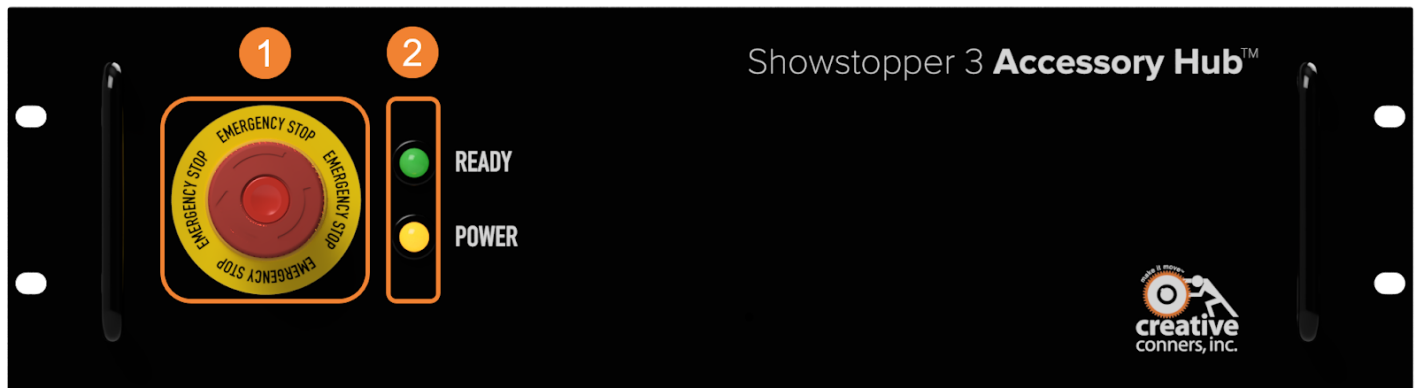
WHAT'S IN THE BOX?

- 1 x Showstopper 3 Accessory Hub (3U)
- 1 x IEC Power Cable
- 6 x Accessory Terminator

If any of these components are missing, please contact us for a replacement.

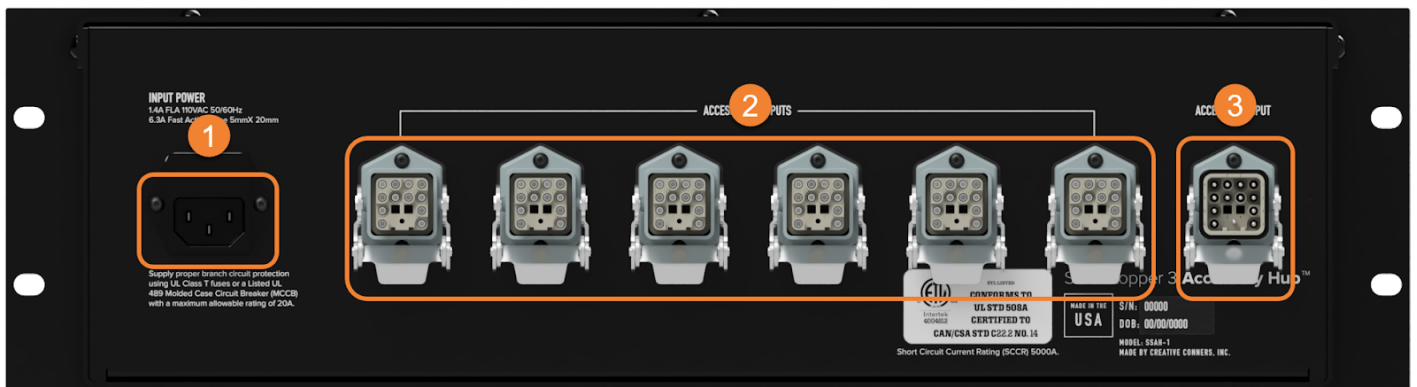
FEATURES

FRONT VIEW



1. E-Stop Button - Big, red, illuminated, mushroom shaped e-stop button
2. Indicator Lights
 - a. Green to indicate that all e-stops on the network have been disengaged and the Showstopper 3 Accessory Hub is ready for operation
 - b. Amber to indicate the Showstopper 3 Accessory Hub has power

REAR VIEW



1. Input Power - 120VAC, 1.4A IEC Socket
2. Accessory Outputs - 6 accessory outputs for connecting to any Showstopper 3 accessory device. I.e. Consolette, Pendant, Stage Manager, Hubs, Remotes, and more. When not in use, you must use the included terminators or the e-stop will stay engaged
3. Accessory Input - 1 accessory input for connecting to your Showstopper 3 Base

INSTALLATION

The Showstopper 3 Base is intended to be rack mounted in any standard 19" rack. Feel free to install it along with other Showstopper devices, a rack PC, a storage drawer for the Showstopper 3 Consolette or in racks with your Stagehand controllers. It can also sit on the operator desk or on top of a Stagehand controller - just be sure it is secured to avoid falling down or being accidentally engaged.

MAKING THE CONNECTIONS

As with all our devices, they need to be connected to function.

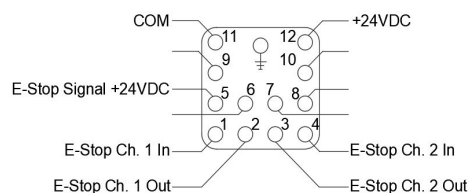
INPUT POWER

Connect the IEC cable to mains power and to the Showstopper 3 Accessory Hub. The power connection must be constant, loss of power to the Showstopper 3 Accessory Hub will stop all movement to any connected Stagehands. We recommend adding in a Battery Backup to avoid power loss issues.

ACCESSORY INPUT/OUTPUT

The Accessory output provides power (+24VDC) to the accessory devices as well as the Remote E-Stop capability. This connection is a standard locking Harting connector (IRC 21mm x 21mm (3A) 12P 10A). This connection is designed to allow devices to be daisy chained together. However, at the end of the chain, you must have a terminator to complete the e-stop circuit. Make sure that any Accessory Output not connected to a device has a terminator.

Below is the pin-out for the Showstopper Accessory output:



TROUBLESHOOTING

The face of the Showstopper 3 Accessory Hub has 2 indicator lights on the faceplate and one indicator light on the red mushroom button to help determine the state of the system. The chart below should help you diagnose any issues.

Indicator	Check Mains Power	Local E-Stop Engaged	Remote E-Stop Engaged	Check Accessory connections and Terminators	Ready to <i>Make it Move!</i>
Ready	-	-	-	-	
Power	-				
Mushroom	-		-	-	-

When the Green and Amber lights are illuminated, you are ready to Make It Move!

Issue	Checkpoint
No indicators illuminated	Check mains power
Red & amber indicators	Check E-Stop mushroom switch on the Showstopper E-Stop Hub
Amber indicator	Confirm no remote E-Stop switch is activated
All connected Stagehands are not releasing E-Stop	<ol style="list-style-type: none"> 1. Confirm the Base has power 2. Confirm no remote E-Stop switch is activated
One of several Stagehands is not releasing E-Stop	<ol style="list-style-type: none"> 1. Confirm Stagehand is connected to Base or E-Stop Hub with Showstopper cable 2. Replace Showstopper cable between Base or E-Stop Hub and the Stagehand
Showstopper Accessories unresponsive	<ol style="list-style-type: none"> 1. Confirm accessory cable is connected 2. Confirm terminations

Refer to the specific device manual for further troubleshooting.

TECHNICAL SUPPORT

If you get stuck, we're here to help. The best way to get in touch with a tech expert is via email - even during normal business hours - because most days we are spread around the shop and may not be near the phone. There's someone in the office from 8:30a-5pm EST Monday - Friday and will return an email or phone call quickly. After hours, (honestly when most tech support issues arise) we have a crack team monitoring email and voicemail who will respond quickly to help get you moving.

- Online: www.creativeconners.com
- Email: support@creativeconners.com
- Phone: 401-289-2942 x2

SPECIFICATIONS

PHYSICAL SPECIFICATIONS

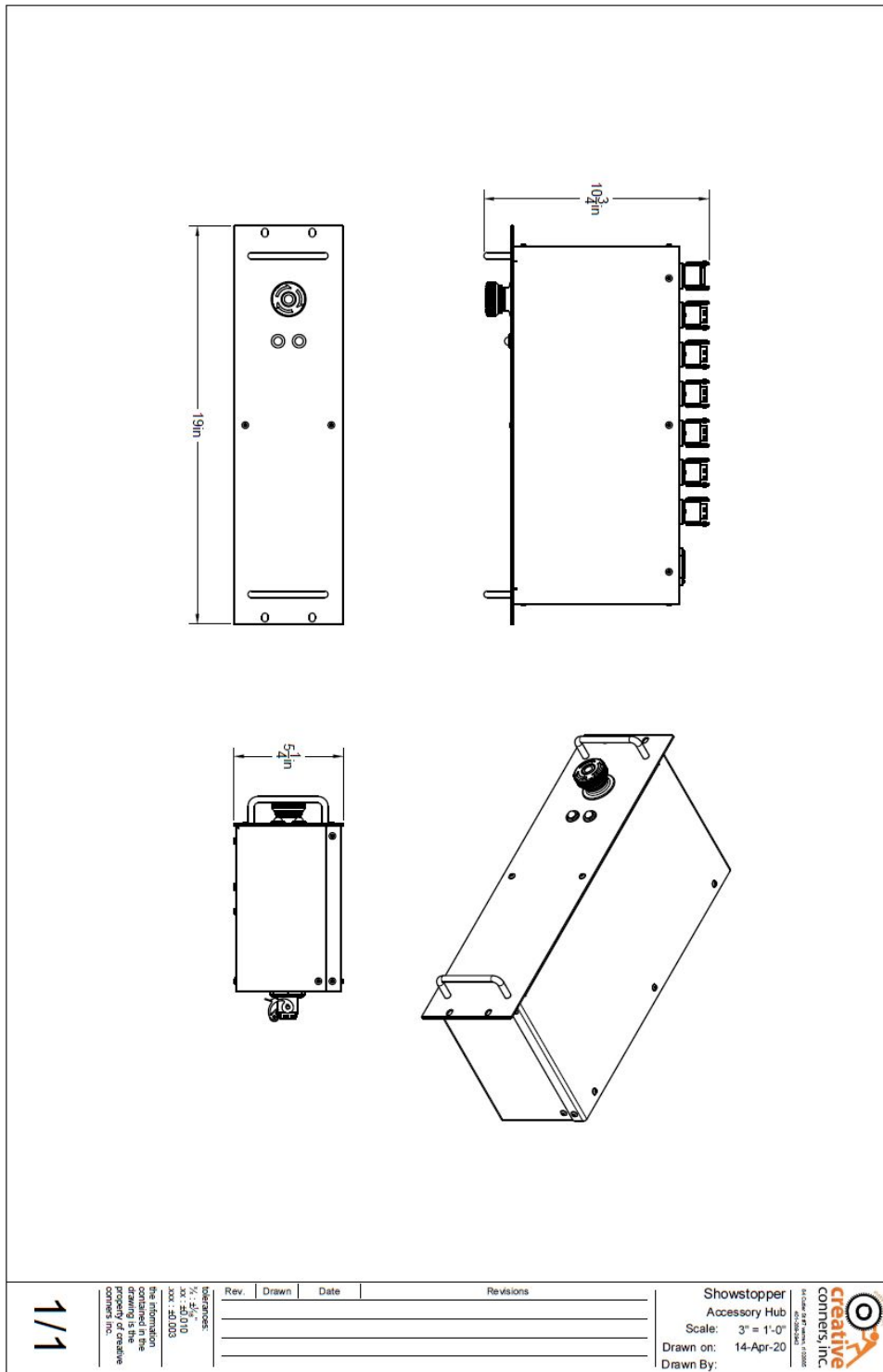
The Showstopper 3 Accessory Hub is packaged in a standard 19" x 3U rackmount case. The overall dimensions are: 17"W x 8"D x 5-1/8"H.

ELECTRICAL SPECIFICATIONS

Description	Value
Input Voltage	120V
Accessory Output	24VDC

DRAWINGS

OVERVIEW DRAWING



Rev	Drawn	Date	Revisions

Showstopper
 Accessory Hub
 Scale: 3" = 1'-0"
 Drawn on: 14-Apr-20
 Drawn By:

1/1

The information contained in this drawing is the property of Creative Commons, Inc.

Creative Commons, Inc.
 15000 E. Harvard Ave. Suite 100
 Denver, CO 80232

WIRING DIAGRAM

